

Company Profile

Since its establishment, SonoScape has been committed to providing high quality medical equipment for the healthcare sector. SonoScape specialized in the development and production of diagnostic solutions. Through innovation SonoScape continues to not only improve the efficiency and accuracy of healthcare solutions, but also to increase a sense of comfort for the patient and clinician. Since 2002, the innovative technology of SonoScape has benefited millions of people and we are dedicated to continue providing more effective and accessible healthcare solutions to the world.

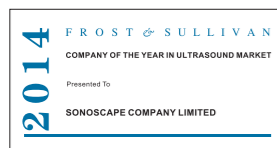
Quote from Frost & Sullivan

FROST & SULLIVAN

"The Frost & Sullivan Award for Growth Leadership is presented to the company that has demonstrated excellence in capturing the highest annual compound growth rate for the last 3 years... The sales of ultrasound devices contribute an overwhelming proportion of total revenue, helping the company strengthen its leading position to outperform the competitors in the marketplace. With increasing penetration of mid-to high-end ultrasound devices, SonoScape is expected to see growth potential in the future..."

Company Milestone

2002: Company Founded in Shenzhen, China
2003: Released SSI-1000: the 1st 15" Portable Color Doppler system in China
2004: Released SSI-2000: the 1st PC platform Color Doppler system in China
2005: Received the "High Technology Company" award from the PRC government
2007: Received "CHINA TOP BRAND" award in the Medical Equipment Industry
2007: Released the 1st Real time 4D ultrasound system in China
2008: Received "European Entrepreneurial Company 2008" award from FROST & SULLIVAN
2008: Received "Flagship Company" award in the Medical Equipment Industry in China
2009: Received "Product Quality Leadership Award 2009" from FROST & SULLIVAN
2011: Received the Reddot 2011 Product Design Award for S20 in Essen, Germany
2013: Received "Ultrasound Market Growth Leadership Award, 2013" from FROST & SULLIVAN
2014: Received the iF product design award 2014 for S9 in Munich, Germany
2014: Received "Company of the Year in Ultrasound Market, 2014" From FOST & SULLIVAN



ISO 13485

CE 0197

SonoScape

Yizhe Building, Yuquan Road, Shenzhen, 518051, China

Tel: 86-755-26722890 Fax: 86-755-26722850

E-mail:sonoscape@sonoscape.net www.sonoscape.com

Xcelsitas
Smart Medical Technologies

Authorized Distributor Leipziger Platz 8, 10117 Berlin

Tel: 49-30-555789950 Fax: 49-30-5556789951

E-mail: info@xcelsitas.com www.xcelsitas.com

SonoScape



The new standard
for HCU

S8

U-S820150421

Caring for Life through Innovation

Powerful Lightweight, Like Nothing Else

The S8 is designed by our genius engineering team to be a very lightweight but powerful system. Although combining high capacity built-in Li-ion battery and two active transducer sockets, S8 still maintains slim, lightweight and compact architecture, ensuring it is available anytime and anywhere.

- 15" LCD anti-glare screen: provides a clear image from any angle
- 2 universal transducer sockets for a quick transducer switch while scanning
- Abundant connection interfaces: DICOM 3.0, USB port, VGA, S-video, and ECG
- Built-in Li-ion battery for more than one hour of continuous scanning
- With the slim and compact trolley, S8 can also be used as a stationary system.



Cutting-edge Features



The S8 is a full-featured portable color Doppler unit from SonoScape, designed in a new, powerful, lightweight architecture to meet all your high performance application requirements, from volumetric 4D with superior rendering capabilities, to cardiovascular exams including adult and pediatric multi-plane transesophageal echocardiography (TEE).

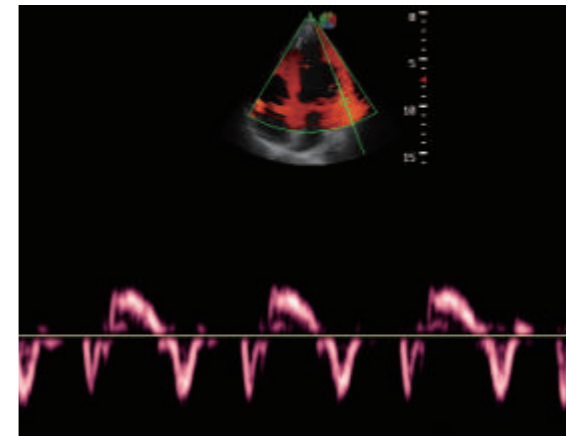
With the superior imaging quality and powerful workflow typically available only in very high-end cart-based systems, the S8 is built to deliver outstanding value for our customers worldwide.

- Complete imaging mode: 2D with THI , Color M,CFM, PDI, PW, HPRF, CW
- Full cardiovascular transducers: adult and pediatric TEE, phased array, pediatric phased array, and high frequency linear array
- Supports high density broadband transducers
- Integrated with state-of-the-art technologies: μ -scan, B-steer, Multiple-beam processing, and 4D imaging
- Comprehensive cardiovascular packages: Stress echo, TDI, Steer M, IMT, and Automatic flow volume analysis
- Intuitive interface and fully functional control panel

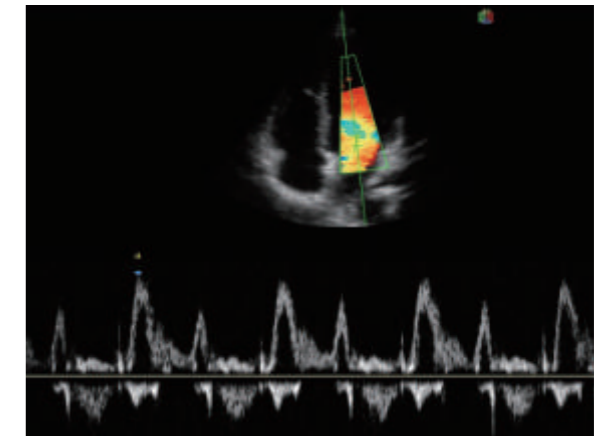


The Multi-specialty High Performance Imaging

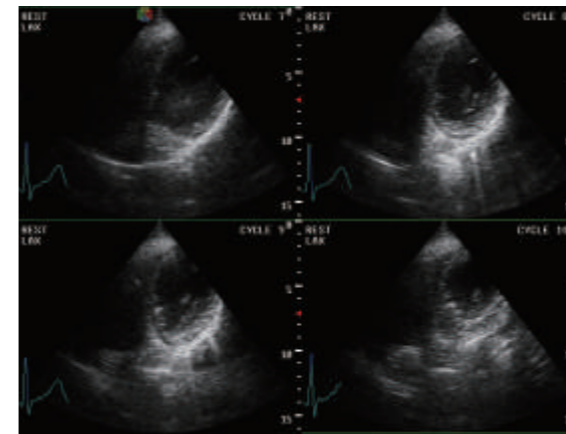
SonoScape has been focusing on what the most important thing for an ultrasound system is, the imaging quality, and successfully developed S8 to allow you to achieve crystal clear, images with greater accuracy, for confident diagnosis on a wide variety of patients.



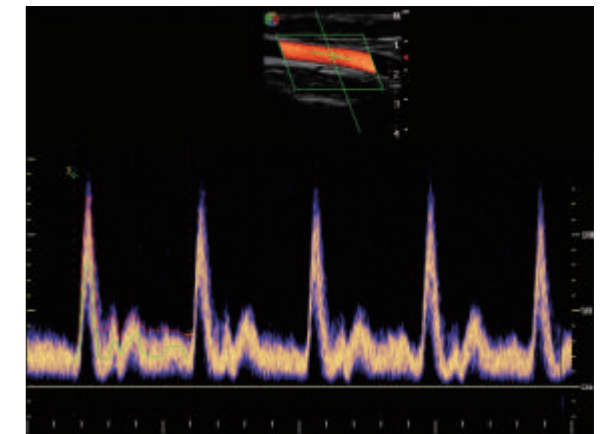
Tissue Doppler Imaging



Mitral Valve Flow



Stress Echo



Common Carotid Artery in PW Doppler



Umbilical Cord Entanglement



Ovary